



***BUILD WITH  
PRECISION,  
INNOVATE WITH PURPOSE***

[www.hydenengineering.com](http://www.hydenengineering.com)



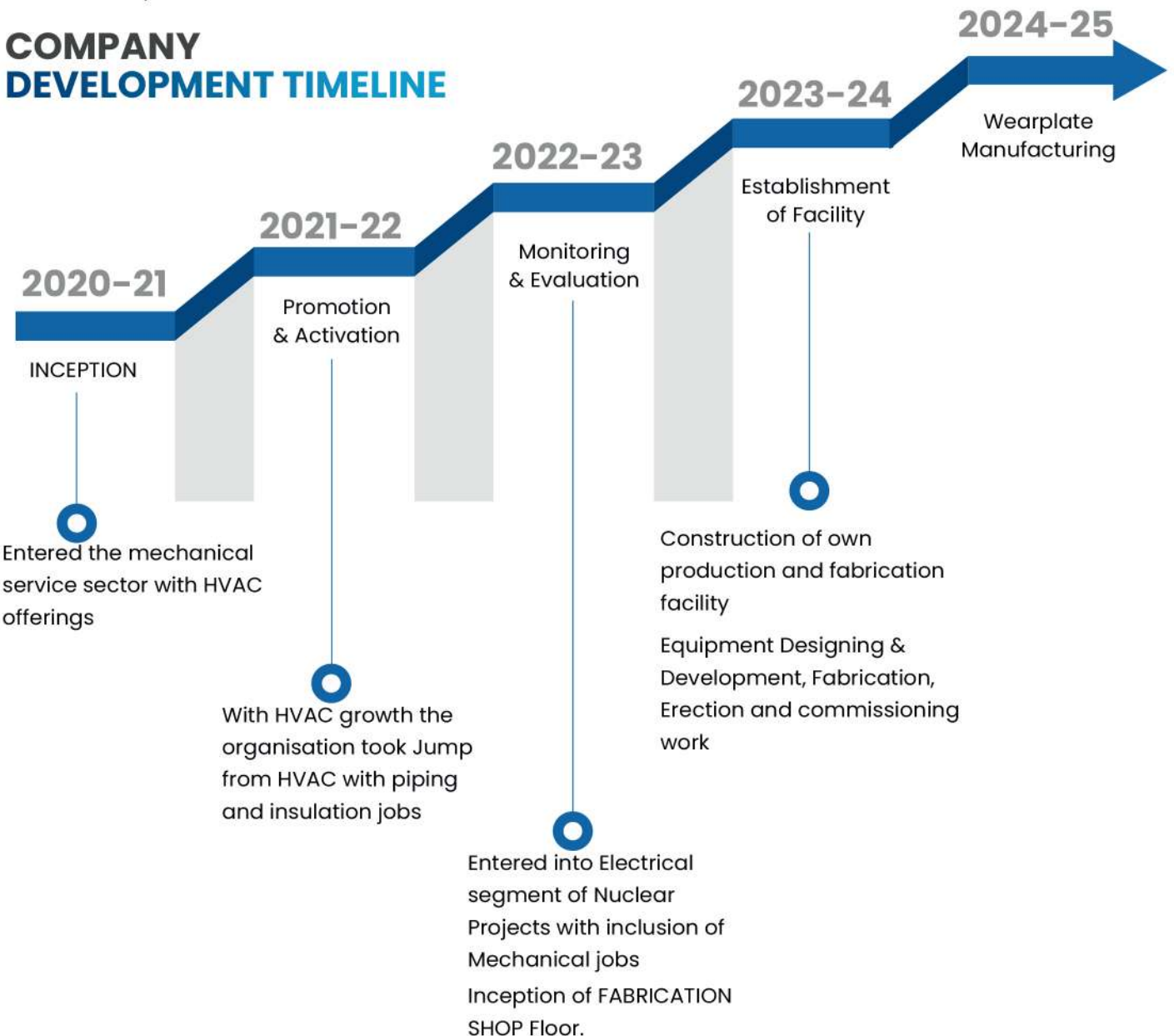
# VISION

To be the trusted engineering partner for industries, delivering smart, innovative, & sustainable Engineering solutions

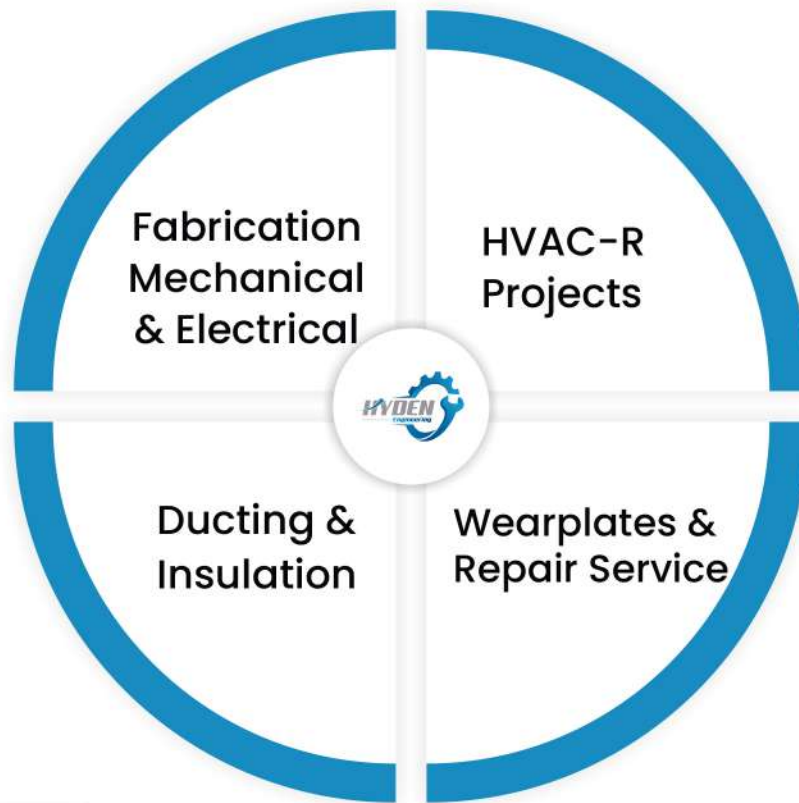
# MISSION

To deliver innovative engineering solutions in fabrication, HVAC systems, and wear plate manufacturing with a commitment to quality, safety, and reliability that empowers industries to perform better, last longer, and operate sustainably.

## COMPANY DEVELOPMENT TIMELINE



Founded in 2020, Hyden Engineering Company delivers reliable, high-quality HVAC-R solutions. Guided by our motto "Together we Grow," our gear-inspired logo reflects progress, teamwork, and innovation. With customer-first service and competitive pricing, we've earned lasting trust in the industry.



### **Engineering Excellence**

Provide innovative, reliable, and cost-effective solutions in fabrication, HVAC turnkey projects, and wearplate manufacturing.

### **Customer Commitment**

Deliver end-to-end services with precision, speed, and long-term value creation for clients across cement, mining, power, and infrastructure sectors.

### **Sustainability & Growth**

·Promote energy-efficient and durable technologies that reduce downtime, improve performance, and support a greener tomorrow.

### **People & Partnerships**

·Build a culture of safety, skill development, and collaboration with clients, suppliers, and employees for mutual growth.

# CORE VALUES

## Excellence

Striving for perfection in every project

## Integrity

Transparent and ethical practices

## Innovation

Embracing modern technologies

## Growth

Mutual progress with clients and team

## Reliability

On-time, within budget, top quality

## OUR SERVICES

Mechanical Solution

01

Electrical Solutions

02

HVAC-R Solutions

03

Wearplates and Repair

04

# RESOURCES

## STATE-OF-THE-ART PRODUCTION FACILITY

Our upcoming production facility at Maroli (Surat) is spread across an area of 8500 Sq.ft, which also has a dedicated training area.



## IN-HOUSE TRAINING

Regular training is provided to the technicians and engineers with special attention to design considerations

## RAPIDLY GROWING WORKFORCE

Hyden Engineering Company has over 70 technicians and engineers deployed at various sites throughout the country



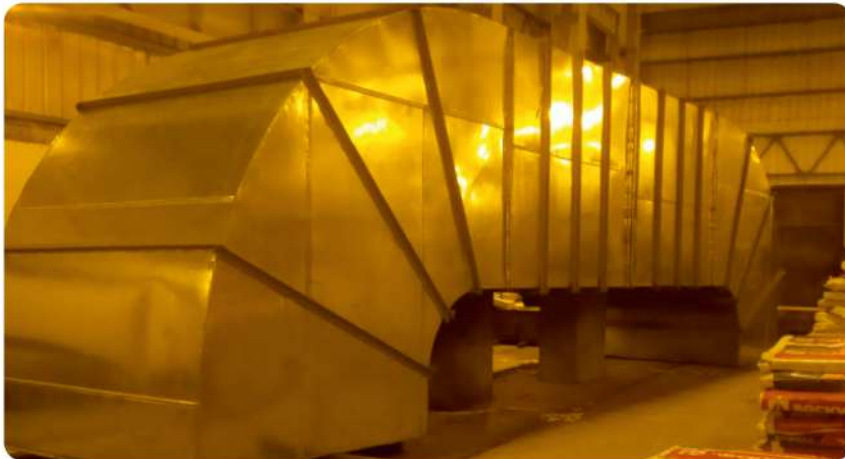
## CREATIVE RESEARCH & DEVELOPMENT

Hyden Engineering Company Research & Development team comprise of two dedicated technical scientists, who help in the continuous improvement of in-house compounds and technologies.

# MECHANICAL

## Piping, Structure & Equipments

- Fabrication of Piping, Structure and Erection
- Shot Blasting and Painting
- Power Plant Installation work
- Manufacturing of Tanks, Reactors, Chimney & other Mechanical
- items for Chemical & other Plants
- Boiler Manufacturing and its accessories



**Experienced in critical industries with high safety & quality standards**

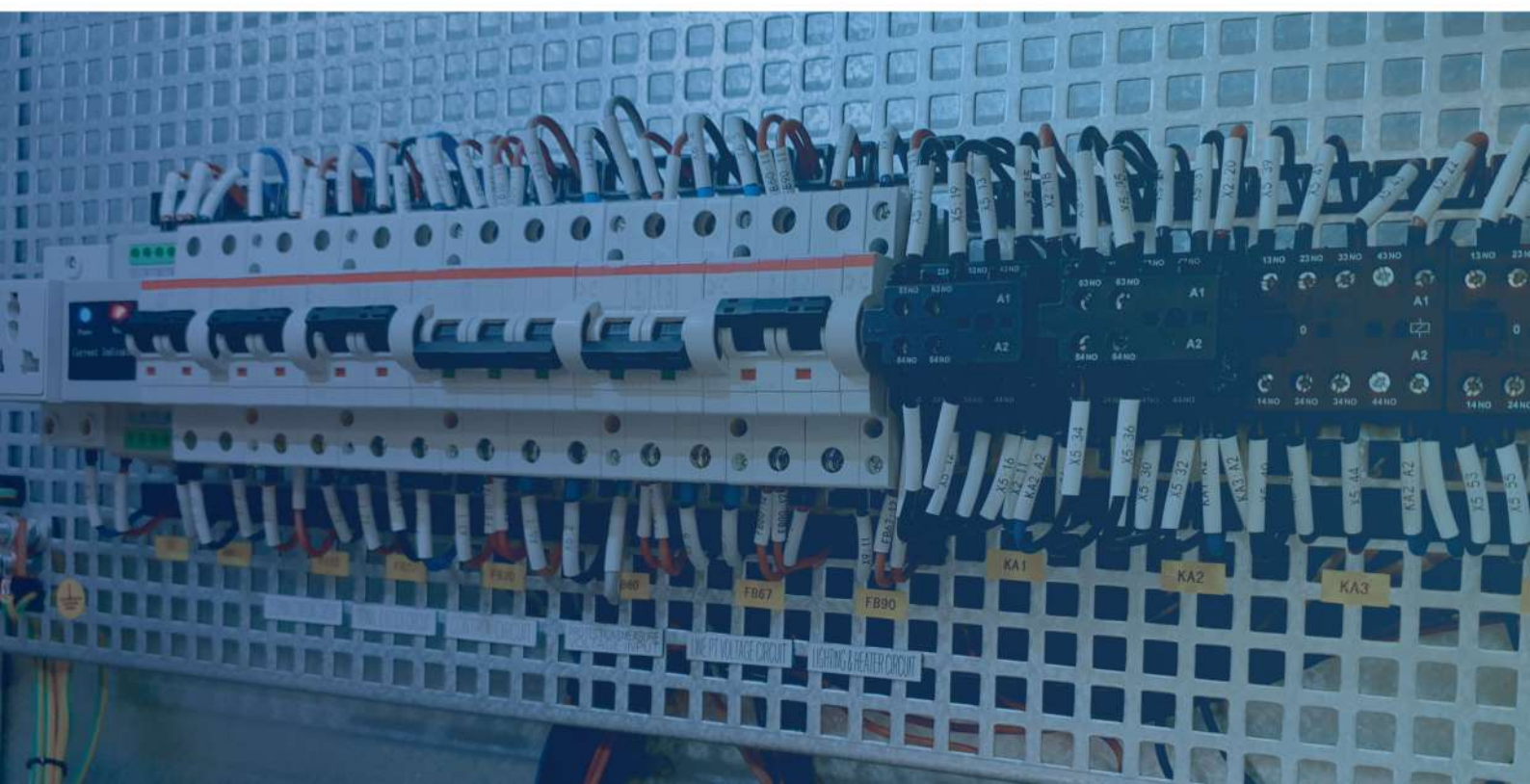
**End-to-end solutions – from design to execution & maintenance**

**Proven reliability in large-scale industrial projects**

# ELECTRICAL

## Cable Tray works

- Cable Tray and Cable Tray structure
- Cable Laying
- C&I Works
- Panel erection and commissioning
- Equipment tubing's



# HVAC-R & INSULATION

We are a trusted engineering solutions provider with proven expertise in HVAC-R systems, insulation works, and industrial services. Our experience spans across Nuclear Plants, Thermal Power Plants, and Lignite-based Plants, delivering high-quality execution with safety, reliability, and cost-efficiency.

## Our Core Services

- Chiller Systems – Supply, Installation, O&M
- HVAC-R Ducting – Design, Consulting, Installation
- Insulation Works – Hot (Boiler, Steam Lines) & Cold (Chilled Water Lines)

## Our Track Record

- Nuclear Power Plants – Specialized ducting & insulation under safety norms
- Thermal Power Plants – Boiler, steam line insulation & HVAC-R chiller installations
- Lignite Plants – Full-scale ducting, insulation, and O&M services

## Heating, Ventilation and Air-conditioning

- Chiller , AHU, Chilled Water Pumps with Motor & Expansion Tanks
- Fresh Air Fans
- Chilled water piping, instrument & valves skid
- Ducting (16 G to 24 G)
- SPLIT AC (2 TR TO 4 TR)
- CASSETTE AC (3 TR TO 6 TR)
- 11 TR Ductable SPLIT AC (11 TR TO 24 TR)

### Insulation's

Cold Insulation's : Nitrile Rubber | All weather insulation | PUFF Sections

### Hot Insulation's

Resin Bonded Mineral Wool | Permaceal insulation

### Duct and PUFF Manufacturing



# WEARPLATES AND REPAIR



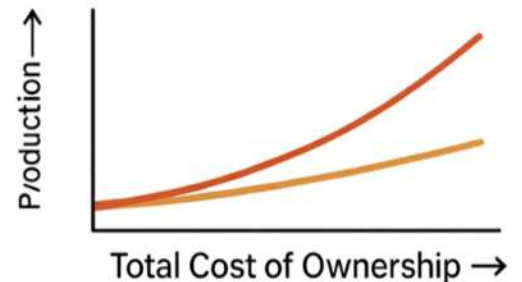
## STEEL PLATES VS WEAR PLATES

Parameter	Standard Steel (Mild Steel)	Wearplates (AR / Hardfaced)
Service Life	3—6 months in heavy wear zones	12—36 months in same conditions
Hardness	150-250 HB	550-700 HB
Downtime Frequency	Frequent replacement	Replacement once a year or less
Weldability	Easy	Moderate
Weight for Same Strength	Heavier	Lighter or thin possible endurance
Total Cost of Ownership (1 Year)	Low material cost + high downtime cost	Higher material cost + low downtime cost

### Protecting Your Equipment. Reducing Your Costs.

#### Your Challenge

- Continuous wear & tear on critical parts (chutes, hoppers, pipes, fans, mills).
- Frequent breakdowns = production losses.
- Replacing components = expensive & time-consuming.



#### Our Solution

- Wearplates Manufacturing – High-quality, custom-cut wear-resistant plates.
- Repair & Reclamation Services – Hardfacing, overlay welding, and part rebuilding.
- Faster Turnaround – Local facility, highly skilled metallurgist, and quick response.
- Cost Savings – Extend life of parts by 2–3X at 30–40% lower cost vs. replacements.

**Expertise:** 5+ years in welding & wear-resistant technology.

**Flexibility:** Both supply of plates & on-site services.

**Reliability:** Consistent quality, quick delivery.

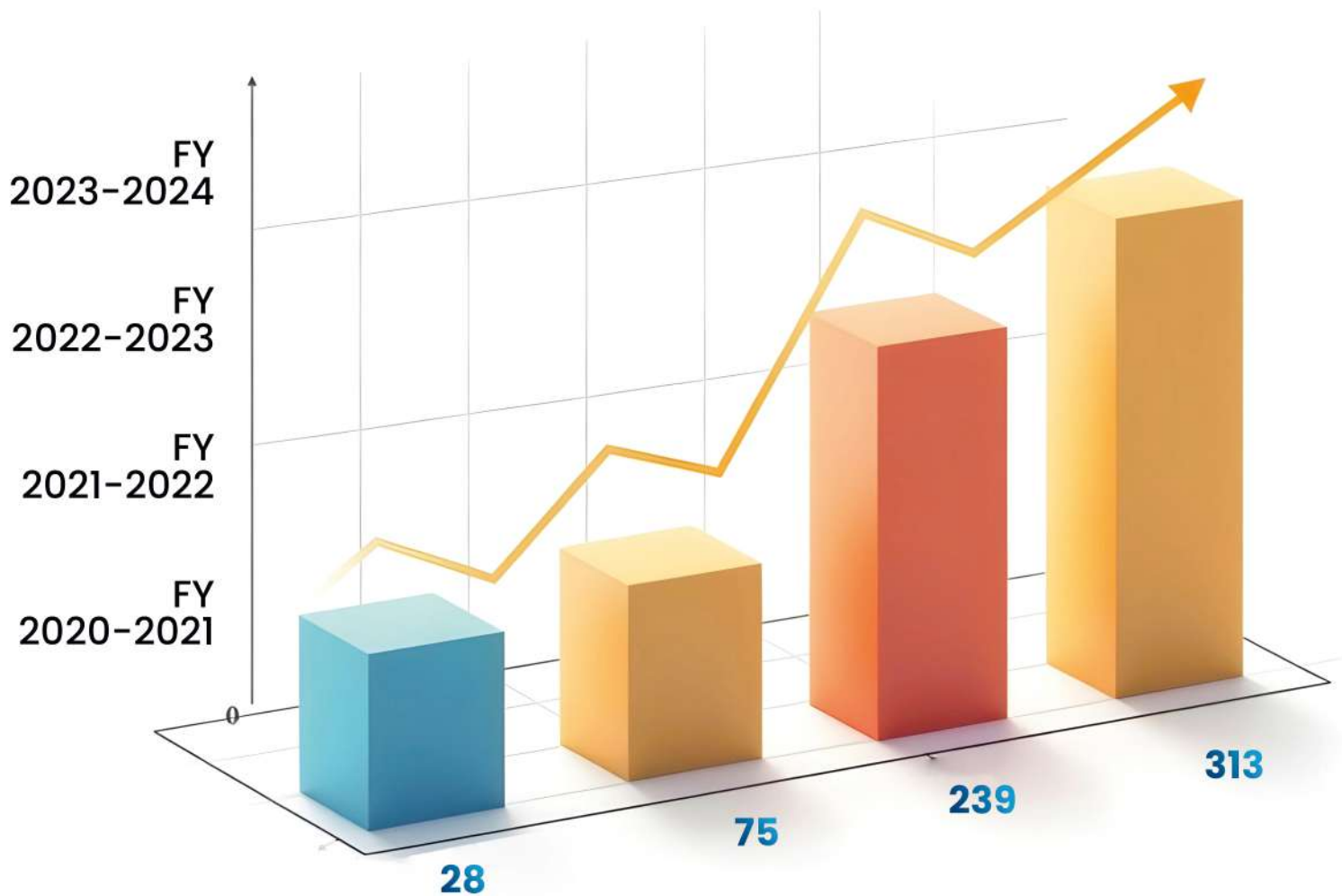
**Industries Served:** Cement | Mining | Power | Construction | Steel

**Reduced Downtime**  
keep your plant running.

**Lower Maintenance Costs**  
optimize OPEX.

**Longer Equipment Life**  
maximize ROI.

# FINACIAL OVERVIEW



As we grow, we want to grow right. For example, we recognize that we have to be in constant touch with our stakeholders to ensure market knowledge at all times.

This is the nature of the channels we deal with. Also, we intend to build our management team correctly. We need the right people in the right place at the right time if we are to ensure optimum growth. We intend to develop our team so that our people can grow as the company grows a mutually beneficial relationship and thus we say, "Together We Grow".

# MAJOR CLIENTS



**Nuclear Power Corporation  
of India Limited**



**Steam House  
Limited**



ArcelorMittal Nippon Steel India

**ArcelorMittal Nippon Steel  
India**



**Gujarat Industries  
Power Company Limited.**



**Powertech Mech Private  
Limited**



**SVNIT,  
Surat**



**Advance Ventilation Private  
Limited**



**Dodsal Enterprise Private  
Limited**



**Sanjoo Dyeing and Printing  
Mills Pvt Ltd**



**Larsen & Toubro**



**STERLING & WILSON**

**Sterling & Wilson Private  
Limited**



## HYDEN ENGINEERING

+91 6356 131611

info@hydenengineering.com

www.hydenengineering.com

Plot no | B-21/22/23/24, Devam eco park Maroli, Navsari-396415